



T2

INTELLIGENT DIGITAL DISK RECORDER

Additional Function Manual SP4.4

Copyright

Copyright 2009-2014 Grass Valley K.K. All rights reserved. Portions of software © 2000 – 2014, Microsoft Corporation. All rights reserved. This document may not be copied in whole or in part, or otherwise reproduced except as specifically permitted under U.S. copyright law, without the prior written consent of Grass Valley, Inc., P.O. Box 59900, Nevada City, California 95959-7900. This product may be covered by one or more U.S. and foreign patents. Grass Valley is a trademark of GVBB Holdings S.a.r.l.

Disclaimer

Product options and specifications subject to change without notice. The information in this manual is furnished for informational use only, is subject to change without notice, and should not be construed as a commitment by Grass Valley, Inc. Grass Valley, Inc. assumes no responsibility or liability for any errors or inaccuracies that may appear in this publication.

U.S. Government Restricted Rights Legend

Use, duplication, or disclosure by the United States Government is subject to restrictions as set forth in subparagraph (c)(1)(ii) of the Rights in Technical Data and Computer Software clause at DFARS 252.277-7013 or in subparagraph c(1) and (2) of the Commercial Computer Software Restricted Rights clause at FAR 52.227-19, as applicable.

Trademarks and Logos

Grass Valley is a trademark of GVBB Holdings S.a.r.l. Grass Valley USA, LLC products are covered by U.S. and foreign patents, issued and pending. Additional information regarding Grass Valley USA, LLC trademarks and other proprietary rights may be found at www.grassvalley.com.

Other trademarks and logos used in this document are either registered trademarks or trademarks of the manufacturers or vendors of the associated products, such as Microsoft® Windows® operating system, Windows Media® player, Internet Explorer® internet browser, and SQL Server™. QuickTime and the QuickTime logo are trademarks or registered trademarks of Apple, Inc., used under license therefrom. Intel and Core i7 are the trademarks or registered trademarks of Intel Corporation or its subsidiaries in the United States of America and other countries. Adobe and Adobe Premiere are registered trademarks of Adobe Systems Incorporated. Final Cut Pro is a trademark of Apple Inc., registered in USA and other countries. XDCAM, MPEG HD422 and XDCAM EX are trademarks or registered trademarks of Sony Corporation. XDCAM EX, SxS, and their logos are trademarks of Sony Corporation. GF and GFPAK are trademarks of Toshiba Corporation.



Manufactured under license from Dolby Laboratories. Dolby and the double-D symbol are trademarks of Dolby Laboratories. Confidential unpublished works. Copyright 1993–2005 Dolby Laboratories. All rights reserved.

Grass Valley Web Site

This public Web site contains all the latest manuals and documentation, and additional support information. Use the following URL.

<http://www.grassvalley.com>.

Manual Explanation

- If there are any variations between the explanation in this manual and the actual application method, priority is given to the actual application method.
- Screenshots and illustrations in this manual may vary from those of the actual product.
- The screenshots used as examples in this manual are those of the development stage, so they may vary from those in the final product.
- This manual is written for users who have a basic knowledge of how to use a computer. If there are no special instructions, perform the same operation as a normal computer operation.
- The contents of this product may modify without prior notice.

T2 Additional Function Manual SP4.4

Ver 1.0

Copyright © 2014 Grass Valley K.K.

All rights reserved.

Contents

1 Introduction	
About this manual	5
2 Export of the logs	
Checking logs of operations and processes	6
Displaying a log	6
3 Select style of the clip when the input signal has discontinued	
R1 settings	7
R1 – Capture settings.....	7
4 Customize frame of play start delay in remote control	
Other settings	8
Miscellaneous – Remote settings	8
5 Other additional / improve functions	
Keyboard shortcut list in workstation mode	9
Support exporting to Sony XDCAM drive (PDW-U1, PDW-U2).....	9
Growing clip icon	9
Support full-screen preview of R1/P1/P2 in workstation mode	10
Lock of front panel operation in workstation mode.....	10
Improve "E to E" icon	11
Support current position in play growing files	11

Introduction

About this manual

This manual describes additional functions included in SP4.4. For basic functionality please refer to the User Manual.

The steps described in this manual is operated in front panel mode.

Export of the logs

Export the logs without to change maintenance mode.

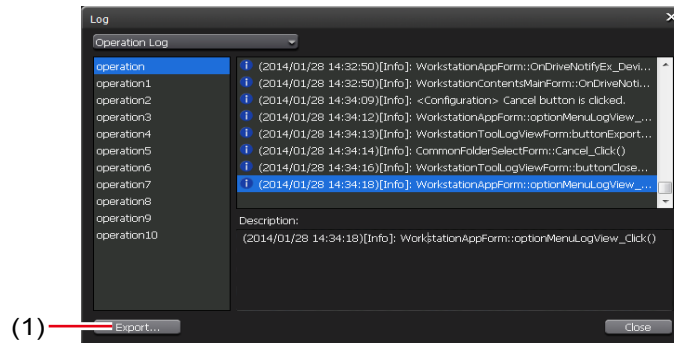
Checking logs of operations and processes

Displaying a log

You can output logs of operations and processes. Use it to find out the cause of troubles.

1. Click [Option] on the menu bar, and then click [Log] -> [Show log...].

➤ [Log] dialog box



(1)	[Export]	Export the logs to external folder which is selected.
-----	-----------------	---

Select style of the clip when the input signal has discontinued

The clips are splited before SP4.3 when input signal has discontinued.

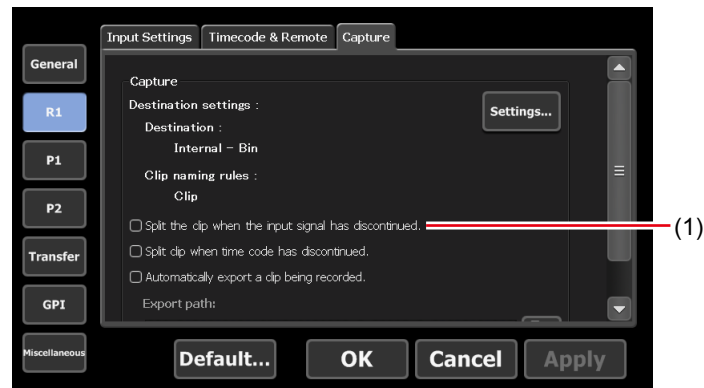
R1 settings

R1 – Capture settings

You can set whether to automatically export files being recorded in the R1 channel.

1. Tap [R1], and then tap the [Capture] tab in the setting screen.

➤ [Capture] tab



(1)	[Split the clip when the input signal has discontinued.]	By checking, divides clips when the input signal has discontinued.
-----	---	--

Customize frame of play start delay in remote control

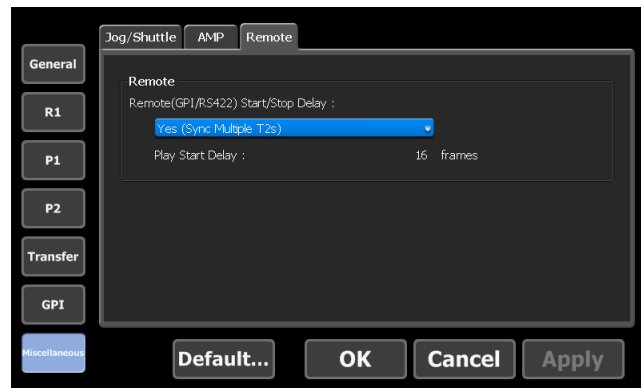
Other settings

Miscellaneous – Remote settings

You can make settings for the remote actions when you control T2 from an external device with the GPI/RS422 command.

1. Tap [Miscellaneous], and then tap the [Remote] tab in the setting screen.

➤ [Remote] tab



[Remote(GPI/RS422) Start/Stop Delay:]

Selecting [No (Minimum)] doesn't set delay.
 Selecting [Yes (Sync Multiple T2s)] sets delay. When multiple T2s are used, this is selected.
 Selecting [Custom] sets delay. You can set custom delay frames.

2. Set each item and tap [OK].

Tap [Apply] to keep on making settings of o

Other additional / improve functions

Keyboard shortcut list in workstation mode

[VARPlay+0.1]	Increase playback speed by x0.1.
[VARPlay-0.1]	Decrease playback speed by -x0.1.
[VARPlay+0.01]	Increase playback speed by x0.01.
[VARPlay-0.01]	Decrease playback speed by -x0.01.
[Keyboard Shortcut]	Assign GPI Input 1 - 6 to a key on the keyboard. When GPI input is active, the keyboard shortcuts will be active.

Support exporting to Sony XDCAM drive (PDW-U1, PDW-U2)

If you export to XDCAM drive (PDW-U1, PDW-U2), you tap [Export], and then tap [Export Media Files to XDCAM Drive...].

Growing clip icon



(1)	Recording	Indicates that the contents is being recorded. The sub clip of recording contents is not shown this icon.
-----	------------------	---

Support full-screen preview of R1/P1/P2 in workstation mode

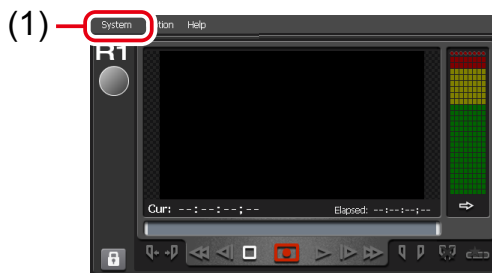
In full screen mode, right-click on it, and then click [Full Screen Mode] or doubleclick on it.



(1) Preview	Displays the video currently played back. In full screen mode, right-click on it, and then click [Full Screen Mode] or double-click on it.
-------------	--

Lock of front panel operation in workstation mode

In lock and unlock front panel, select [System] in menu bar, and then click [Lock Front Panel]. This mode is unlocked to push [R1]+[P1]+[P2]+ [SHTL/VAR] buttons same time also.

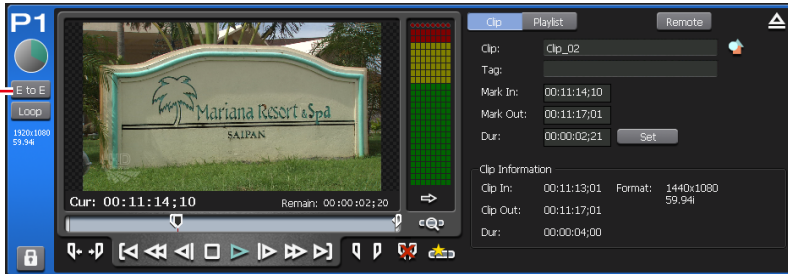


[System]	<p>[Lock Front Panel]</p> <p>Lock and unlock front panel. This mode is unlocked to push [R1]+[P1]+[P2]+ [SHTL/VAR] buttons same time also.</p>
----------	---

Improve "E to E" icon

In E to E mode, the E to E indicator will display blue text when R1 channel is played, and white text when P1/P2 is played.

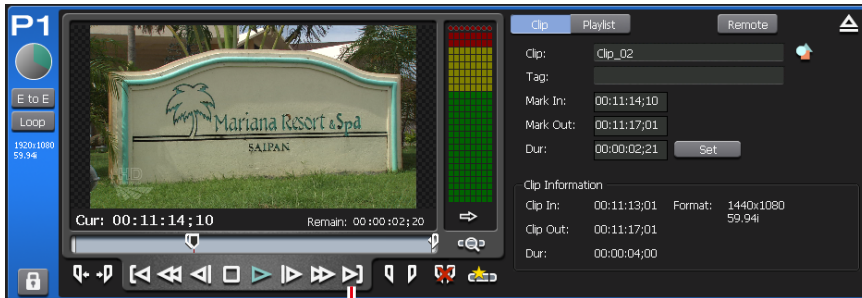
(1)



(1)	E to E mode indicator	The E to E indicator will display blue text when R1 channel is played, and white text when P1/P2 is played.
-----	------------------------------	---

Support current position in play growing files

Support to seek current position in play growing files. If you select [Move to next edit point] in P1/P2 when you play recording data, move to latest recording point..



(1)

(1)	[Move to next edit point]	<p>In the TRIM mode of the clip view or playlist view, moves to the next edit point (In/Out point after trimmed, end of the clip) by every click.</p> <p>In the playlist view, moves to the In point of the next event.</p> <p>If you play recording data, move to latest recording point.</p>
-----	----------------------------------	--